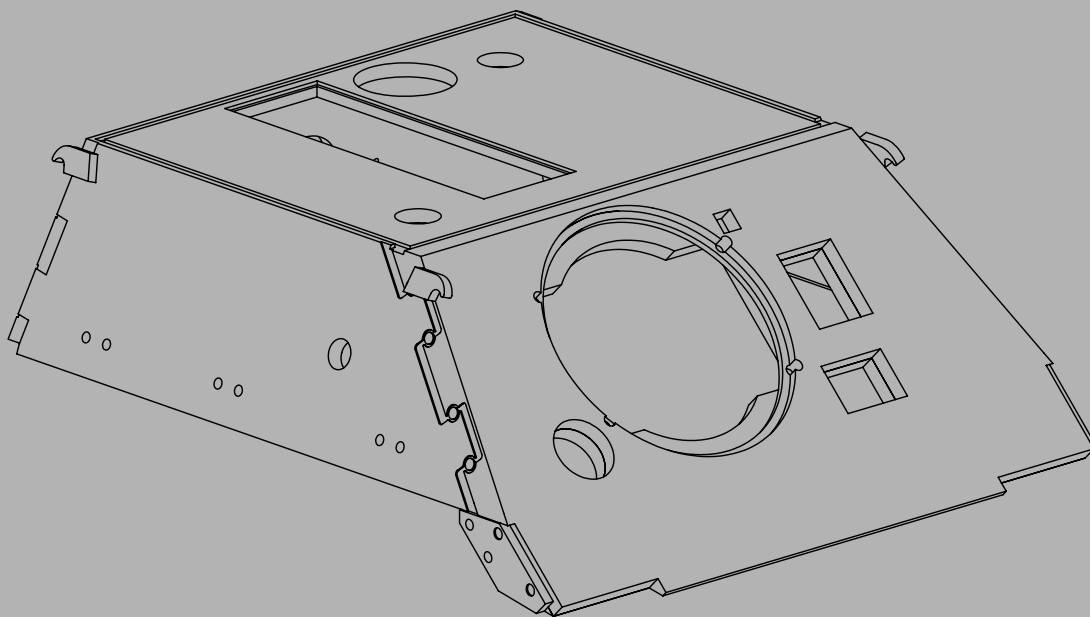


WECOHE

Assembly Instructions for Sturmtyger-Superstructure (Tamiya 1/16 Scale Tiger I conversion)



***Read these instructions carefully and review the drawings before
you start the assembly!***

The manufacturer doesn't take any responsibilities neither of any damages or malfunctions that might cause by
modifying original parts nor that might cause by using this product.

WECOHE

Assembly Instructions for Sturmtiger-Superstructure

Introduction:

The Sturmtiger-Superstructure is based on the 1/16 Tamiya kit of the Tiger I.

The main components of the basic Tamiya kit to be furthermore used for the Sturmtiger, are the drive system and suspension, the lower hull and the engine compartment deck. Some of the smaller parts and accessories need to be installed too.

It is of notice, that Sturmtiger typical alterations were accurately represented by this conversion.

A rocket motor with shield and mantlet, as well as the hatches etc. are separately available !

For further information please refer to: www.WECOHE.de

Preparation:

You need to have the following tools at hand:

- **Sharp knife or razor saw**
- **an assortment of files**
- **sanding paper (400/240/120/80)**

Please pay attention to the following notes:

The CNC-milled components of the superstructure can be easily removed out of their frame. They are to be sanded, cutted and drilled and afterwards be primed and painted with regular tools, abresives and paints. They are to be glued with poly cement for plastic kits.

Due to the milling process, the inner corners are rounded and need to be edged out to fit to each other, using a sharp knife or scalpel.

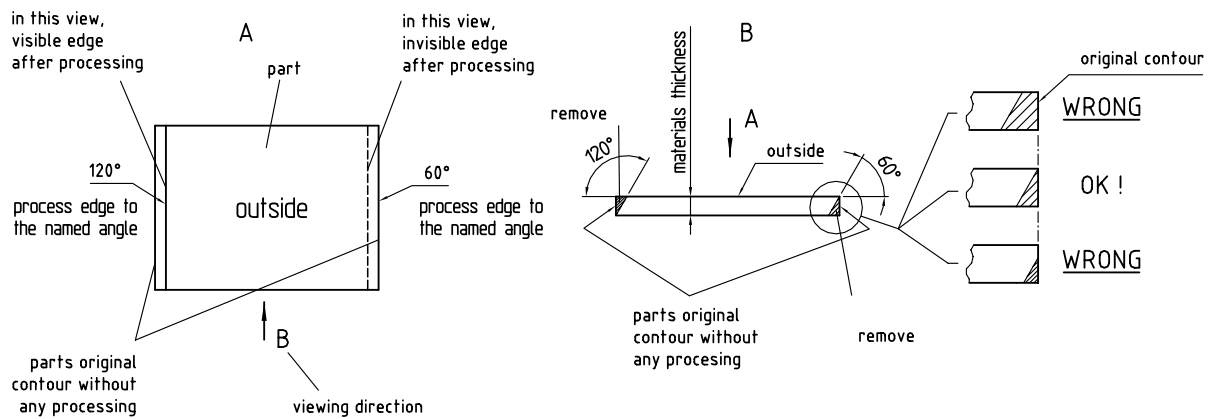
Also because of the milling process, all intersections are right angled (90°) to the surface. They have to be sanded down in most cases to a certain angle using a file or sanding paper. The appropriate angle is evident from the drawings referring to each step!

The named angles in the drawings always (!) refer to the later on visible side of the plate and the belonging cut edge.

Note: All measurements are specified in millimeters!
25.4mm = 1" inch

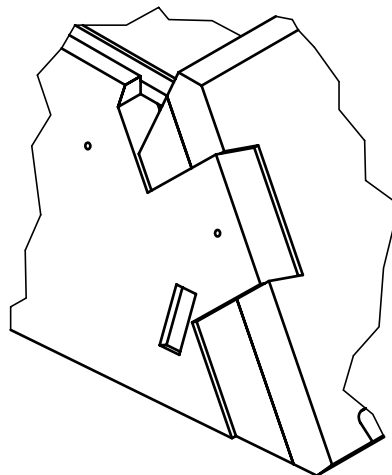
While working the edges please note that the parts already feature the exact external measurements.

Please refer to this example:

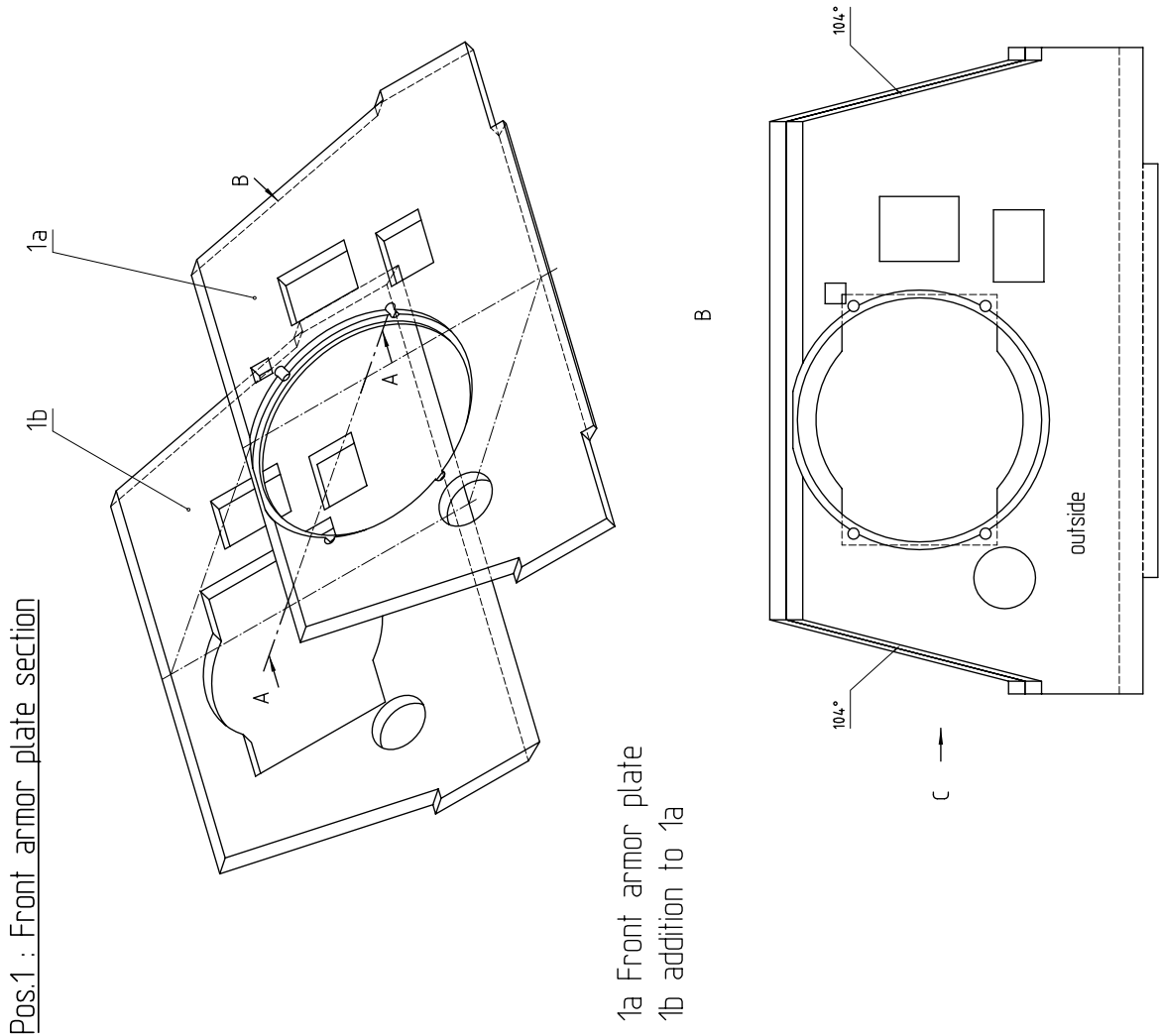
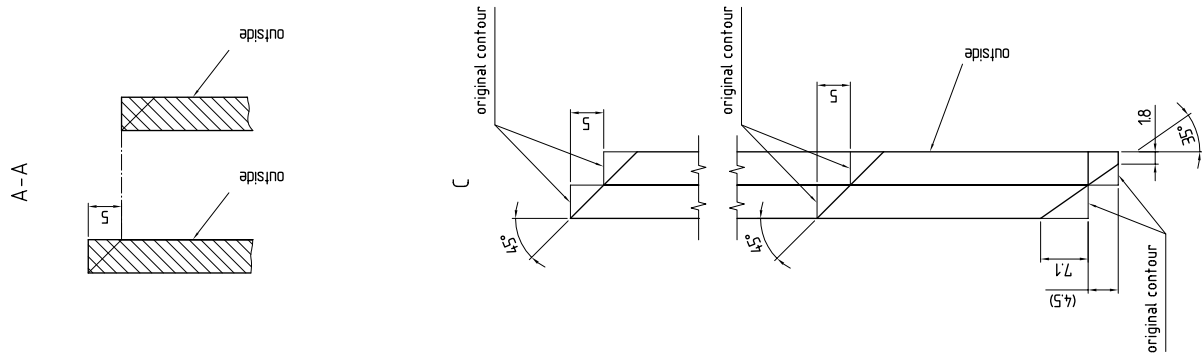


We advise to work all edges, that are not involved in the build up process (the plates to each other), after the assembly of the superstructure, to receive a flushing appearance. Especially when such an edge covers more than one plate.

Last not least a hint referring to the interlocked sections of the superstructure at german armored vehicles as the Sturmtyger. As you can see from the drawing below, there are steps in this section! In this example they are copied from the original Jagdtiger (the armor plates didn't flush on the real tank, too!)



Step 1



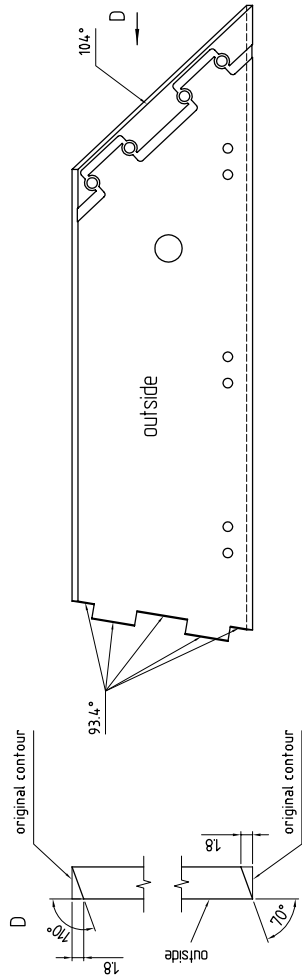
Pos.1 : Front armor plate section

1a Front armor plate
1b addition to 1a

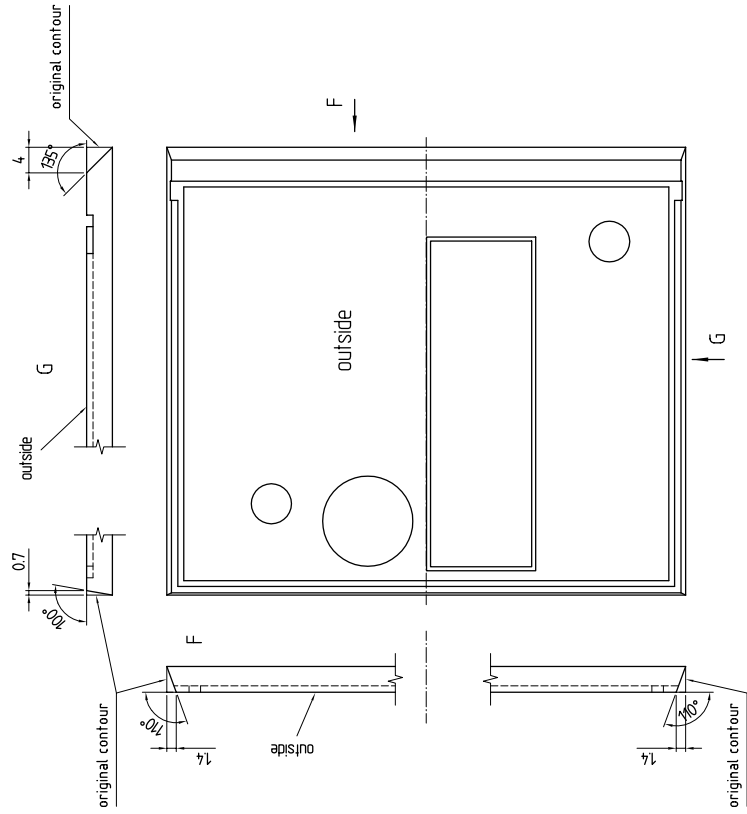
Step 2

Pos.2 / (3) : Lateral armor plate

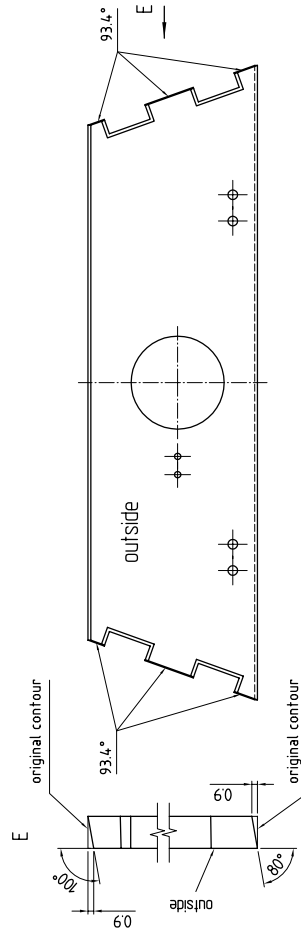
the drawing displays the processing of the right armor plate's edges and has to be mirrored to suite for the left side



Pos.5 : Amored roof



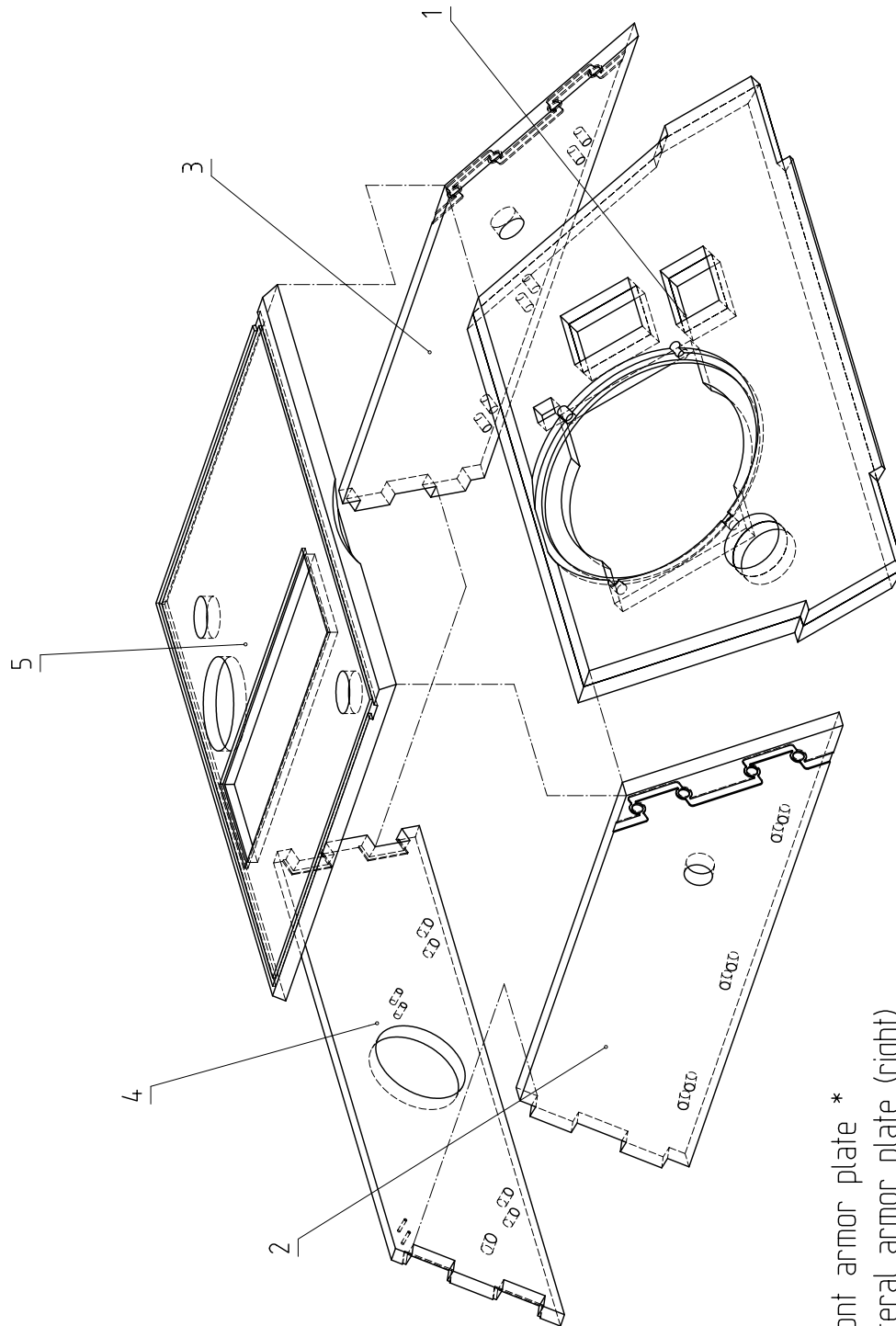
Pos.4 : Rear plate



WECOHE

Assembly Instructions for Sturmtiger-Superstructure

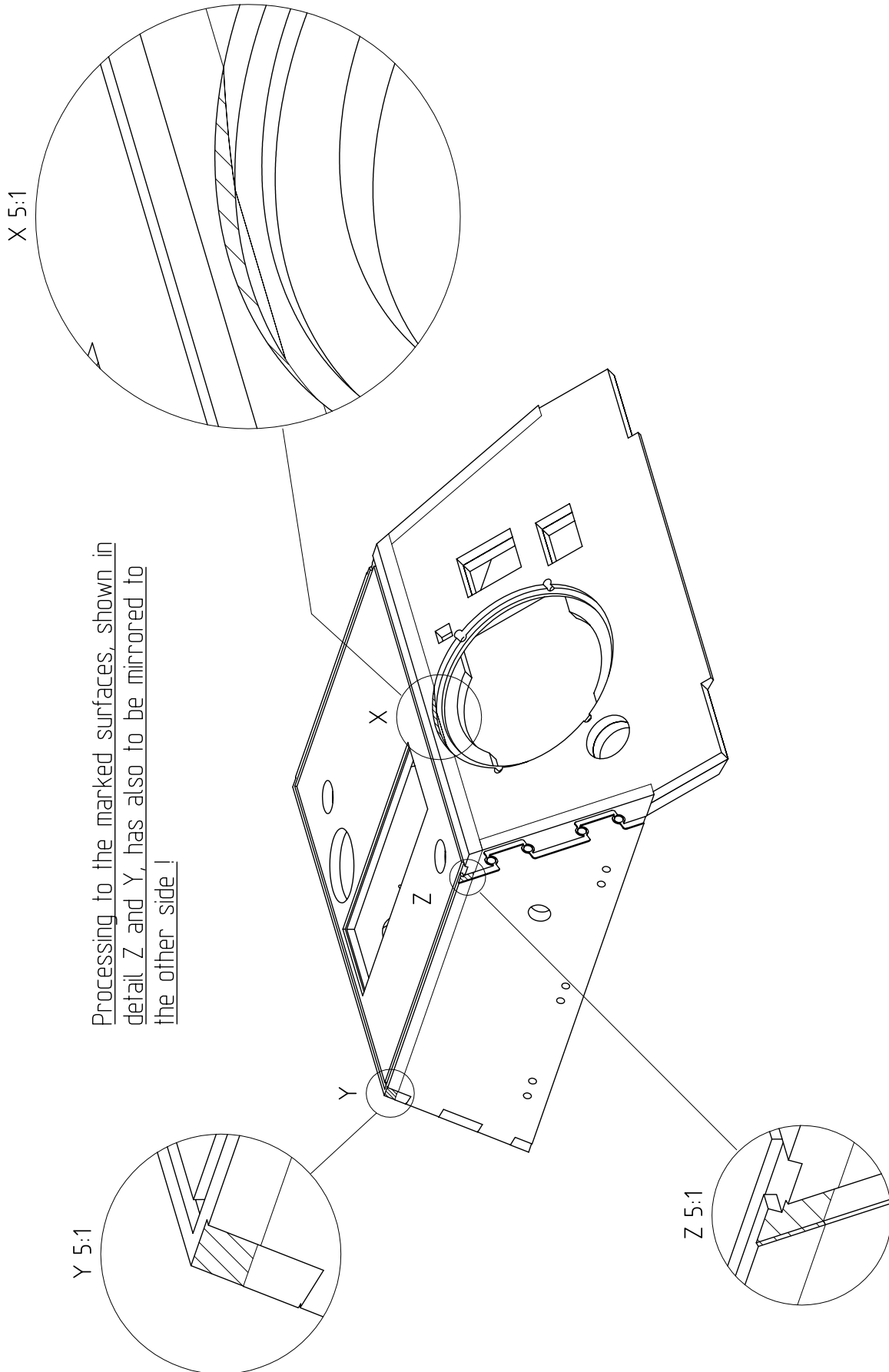
Step 3



- 1 Front armor plate *
- 2 lateral armor plate (right)
- 3 lateral armor plate (left)
- 4 rear armor plate
- 5 armored roof

* = assembly unit

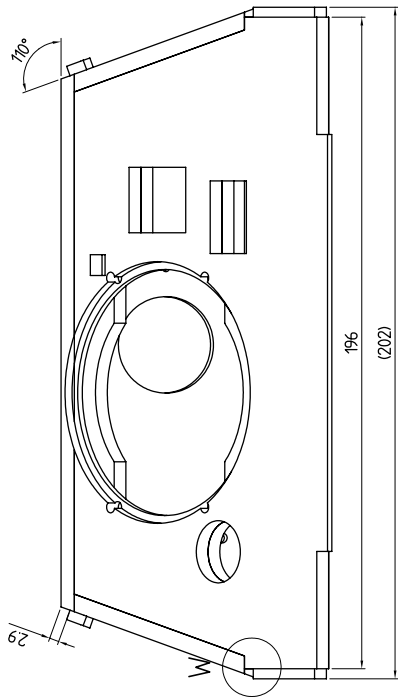
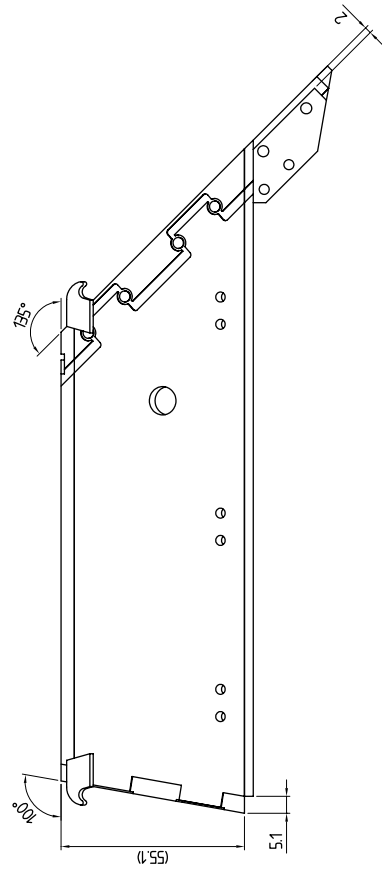
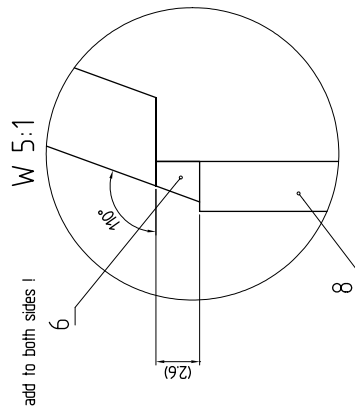
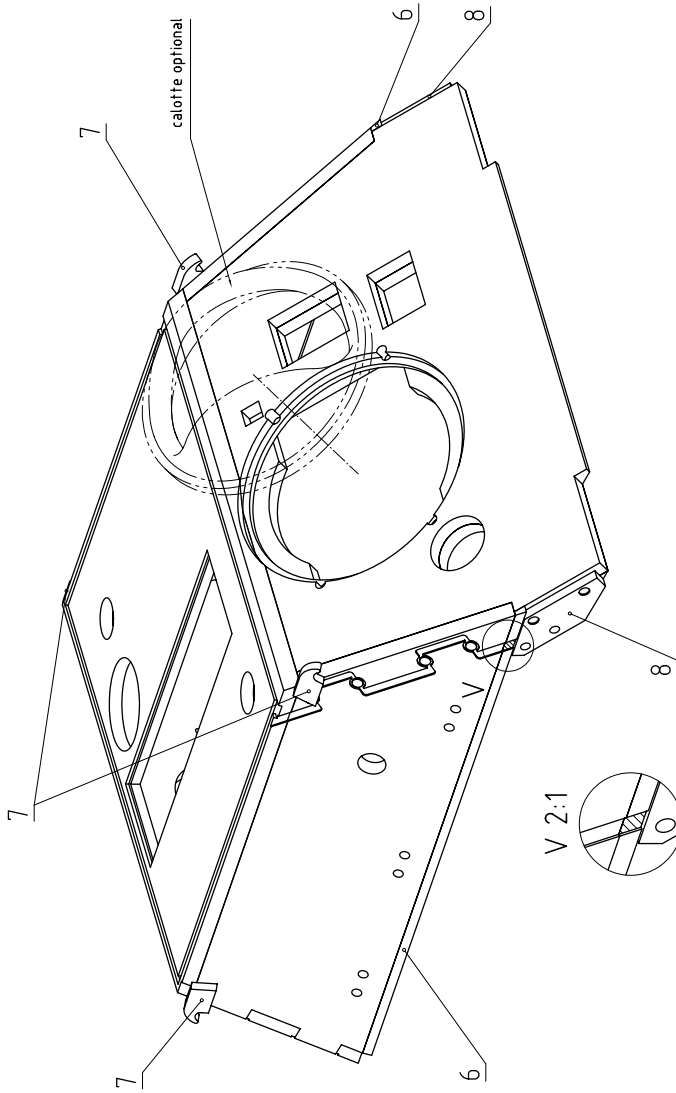
Step 4



Processing to the marked surfaces, shown in detail Z and Y, has also to be mirrored to the other side!

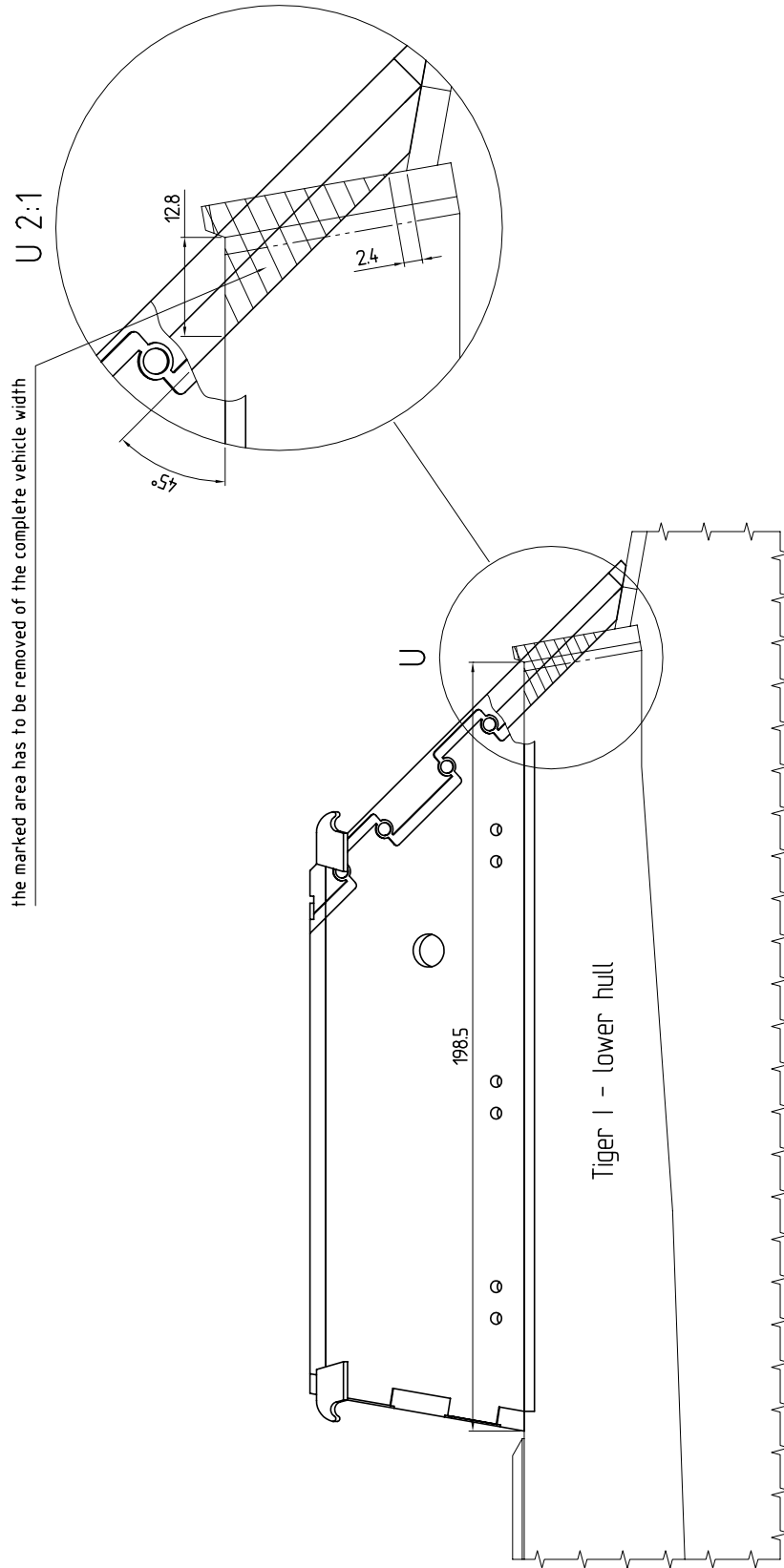
Step 5

- 6 lateral adapter parts
- 7 lifting hooks
- 8 front adapter part



Step 6

Modification of Tiger I
original - lower hull



WECOHE
Assembly Instructions for Sturmtiger-Superstructure

Thank you for your purchase of our products and Happy Tanking!

Elite Armor Productions & WECOHE Products

www.elitearmor.com

www.wecohe.com