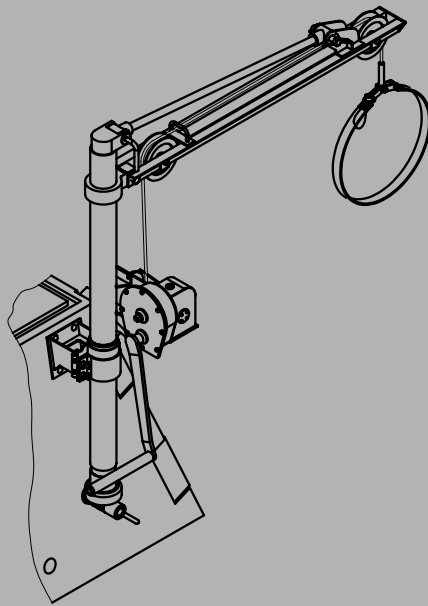


# WECOHE

## **1/16 Scale Sturmtiger Conversion / Ammo Loading crane instruction**



***Read these instructions carefully and review the drawings before  
you start the assembly!***

The manufacturer doesn't take any responsibilities neither of any damages or malfunctions that might cause by  
modificating original parts nor that might cause by using this product.

**ELITE ARMOR PRODUCTION and WECOHE PRODUCTS**  
**Assembly Instructions for 1/16 Scale Sturmtiger Conversoins**  
**Amunitioncrane**

## **General Instructions**

You need to have the following tools at hand:

- Long or flat nose pliers
- pair of tweezers
- small metal saw
- small file and sanding paper (400/120)
- drills / diameter: 0,6 / 0,8 / 1,0 / 1,5 / 2,2 / 3,6 mm
- soldering iron

A folding tool, like a "Hold and fold", would be helpful with the preparation of the photoetched parts.

**Note: All measurements are specified in millimeters!**  
**25.4mm = 1" inch**

Some waste plugs and burr need to be removed, using a file or sanding paper, before commencing assembly. Always test the fitting of the parts prior to use.

The photoetched parts could be processed using a soldering iron or glue (cyanoacrylat).

## **How to read the drawings**

Each of the following drawings illustrate the assembly of a certain subassembly or their mounting to each other.

The steps are structured in 'Preparation' and 'Assembly'. The key for identification of parts, is listed below.

- C –parts = castings
- E –parts = photoetched
- N –parts = nut
- R –parts = piece of rod
- S –parts = screw
- T –parts = piece of tube

An arrow linked with a letter, hints to a rectangular view with all dimensions of the parts marked.

**Assembly Instructions for 1/16 Scale Sturmiger Conversoins  
Amunitioncrane**

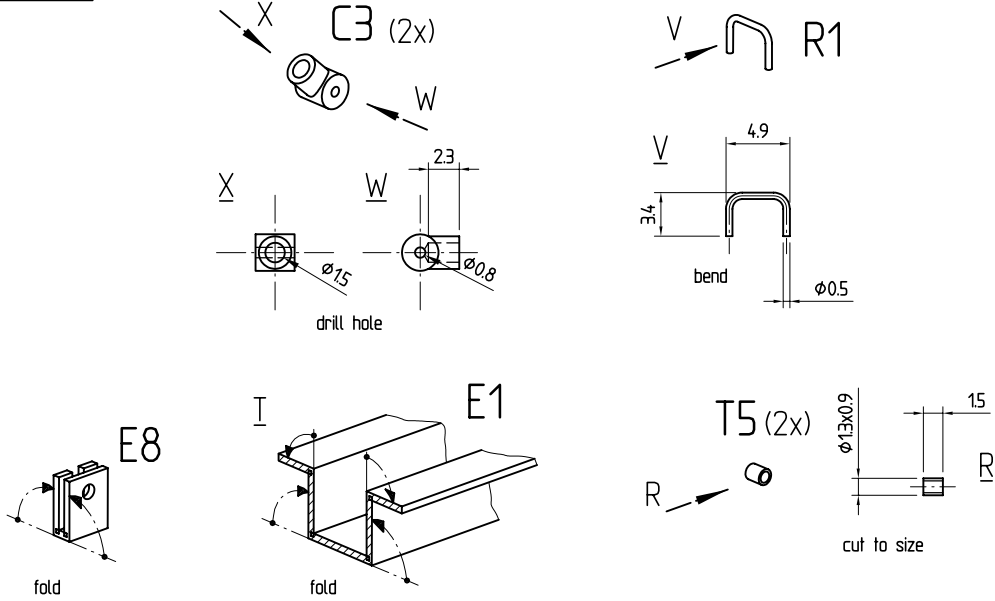
**Step 1**

Preparation:	Assembly:
<p> <b>C1</b>              Z  <b>C2</b>              Y  <b>T1</b> 7.8              cut to size <math>\phi 5 \times 4</math>  <b>T3</b> 215              cut to size <math>\phi 5 \times 4</math>  <b>T4</b> 80              cut to size <math>\phi 4 \times 3</math>  <b>T2</b> 33.7              cut to size <math>\phi 5 \times 4</math>              drill hole <math>\phi 0.8</math>              15              13              drill hole <math>\phi 0.7</math>              13              15         </p>	<p>             = Parallel I              10.8              35.5              C1              T1              C2              T2              T4              bush1              T3              Do not glue!              bush2         </p>

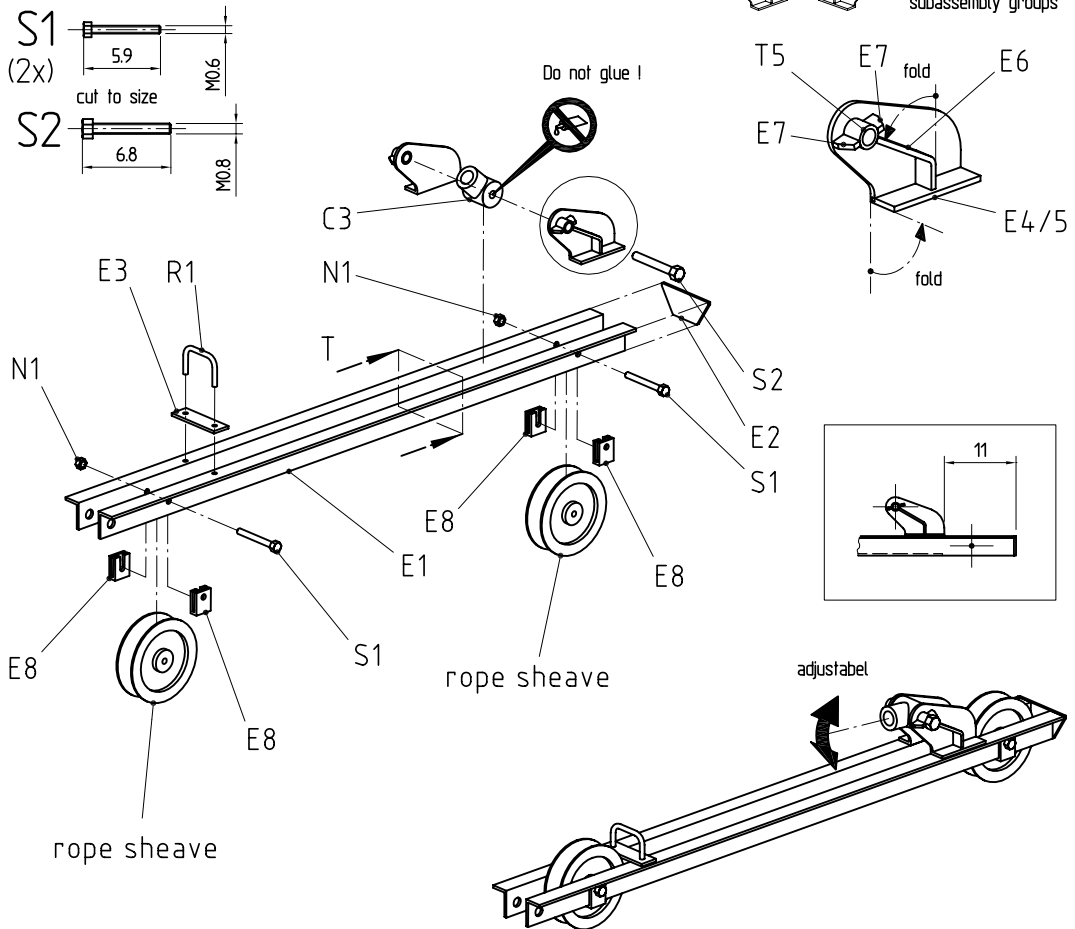
**Assembly Instructions for 1/16 Scale Sturmiger Conversoins  
Amunitioncrane**

**Step 2**

Preparation:



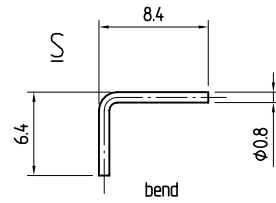
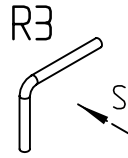
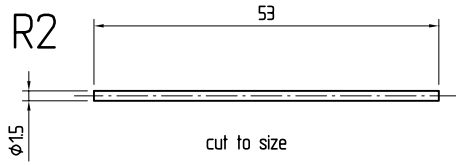
Assembly:



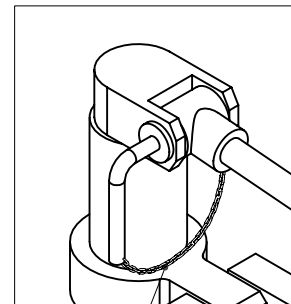
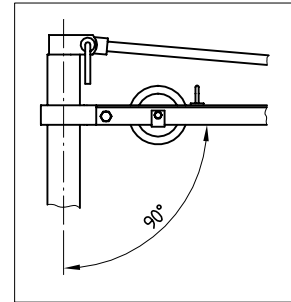
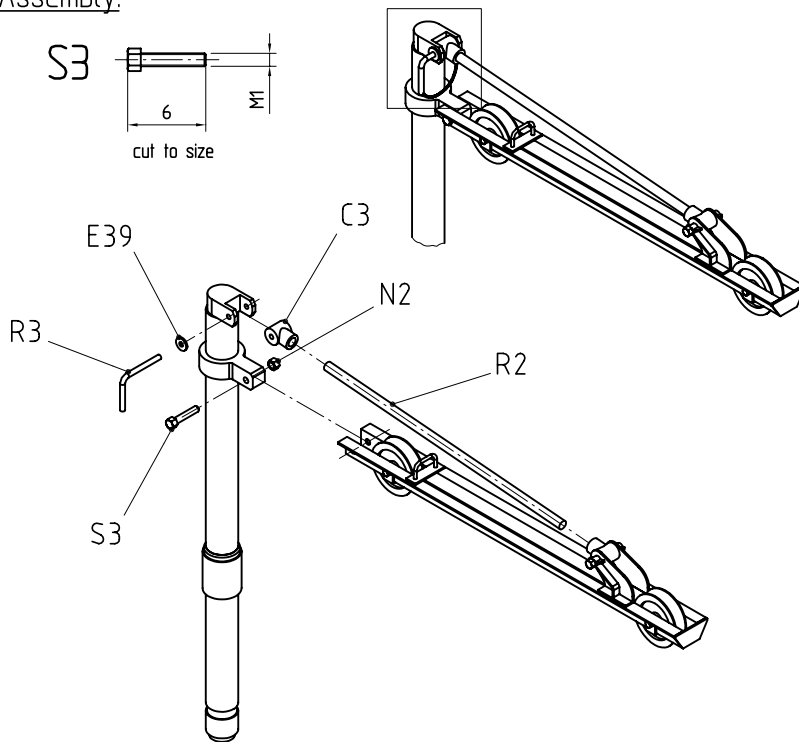
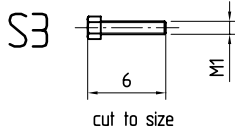
**Assembly Instructions for 1/16 Scale Sturmiger Conversoins**  
**Amunitioncrane**

### Step 3

Preparation:



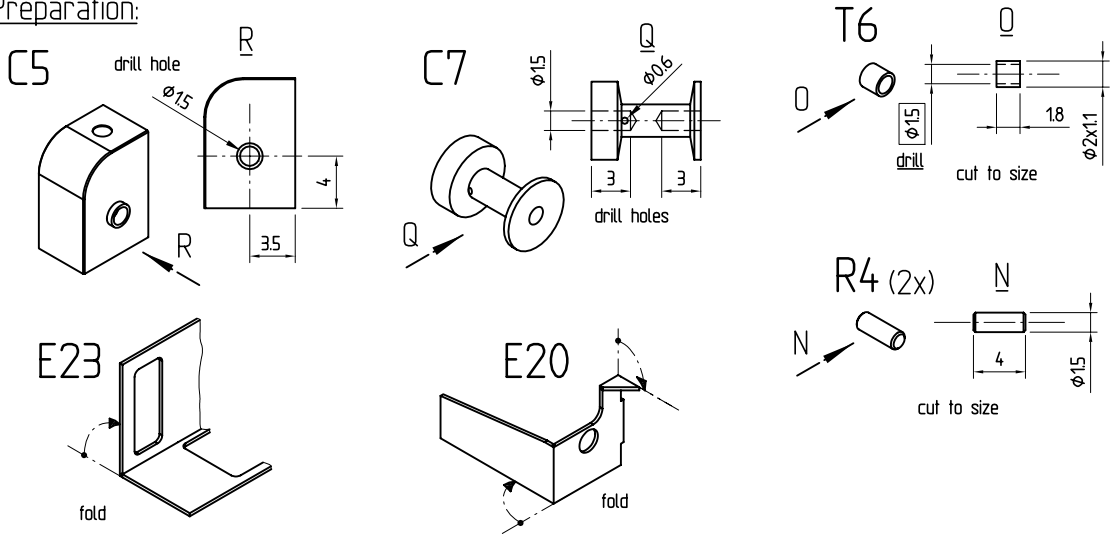
Assembly:



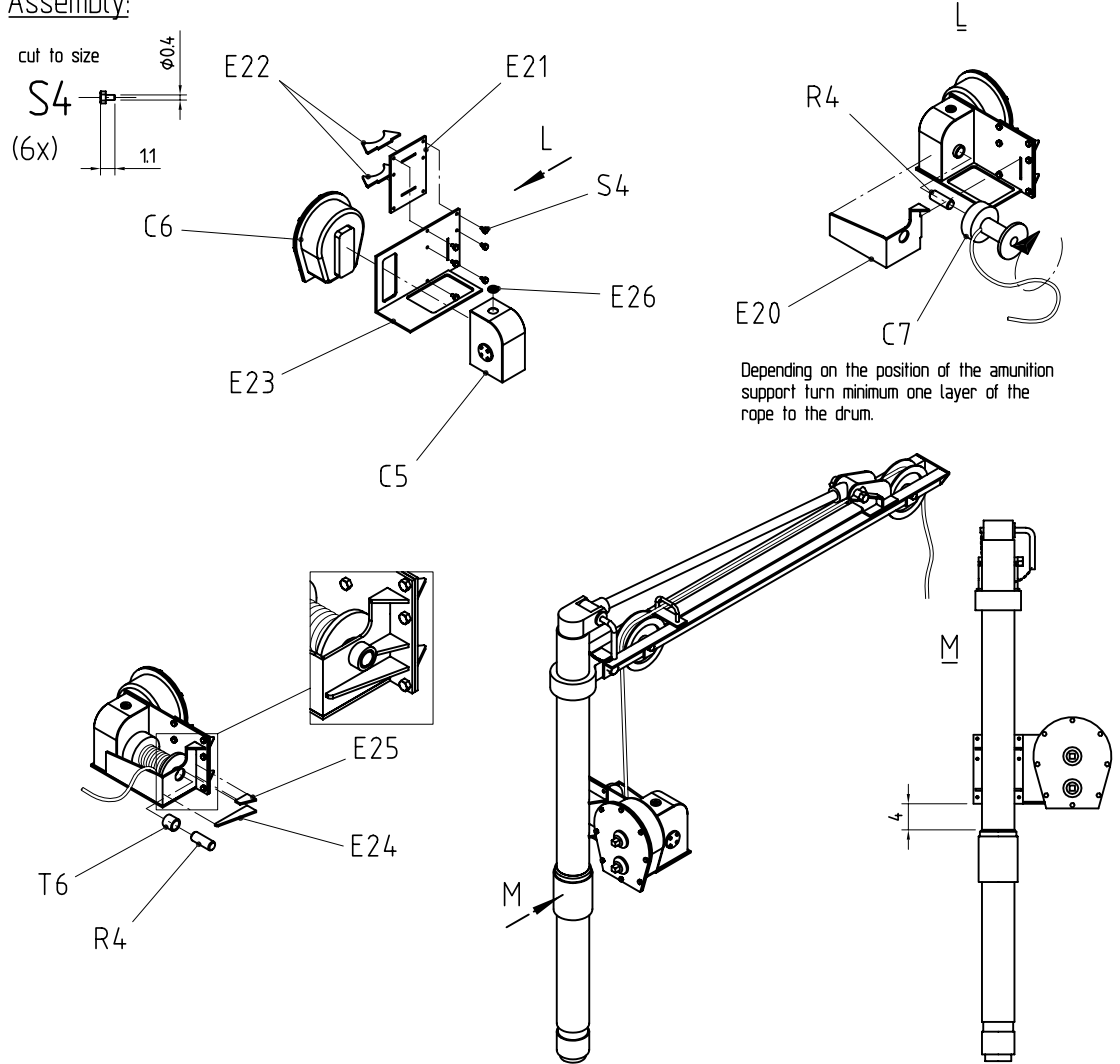
**Assembly Instructions for 1/16 Scale Sturmiger Conversoins**  
**Amunitioncrane**

**Step 4**

Preparation:



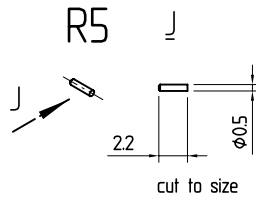
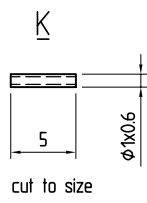
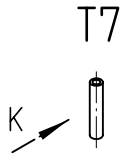
Assembly:



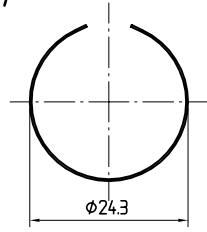
**Assembly Instructions for 1/16 Scale Sturmiger Conversoins**  
**Amunitioncrane**

**Step 5**

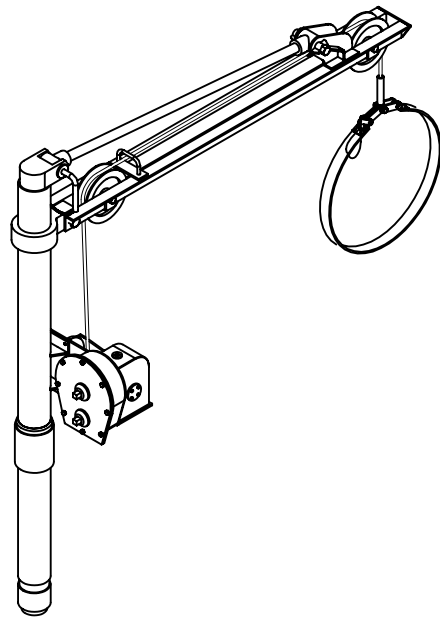
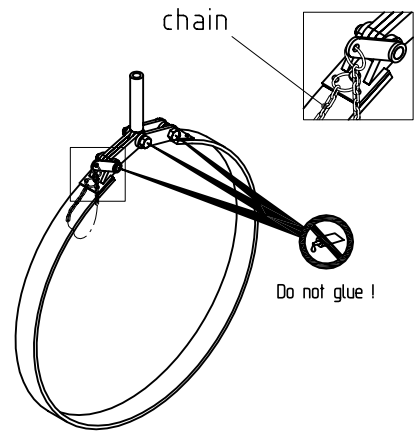
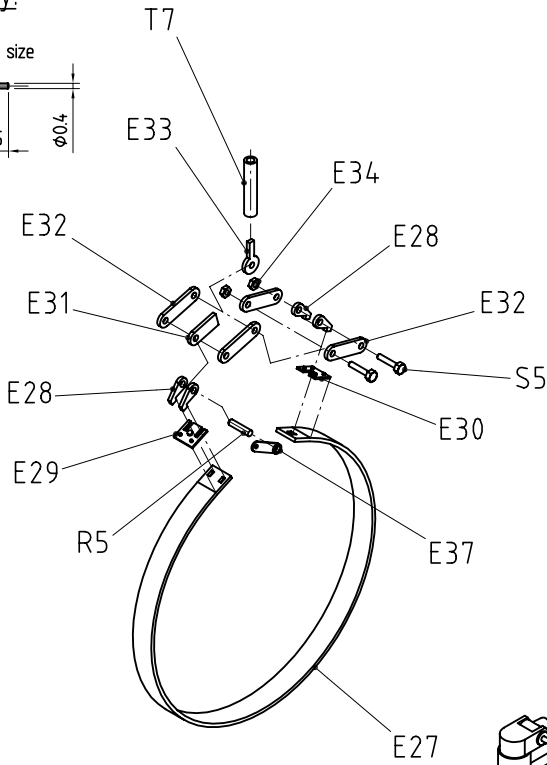
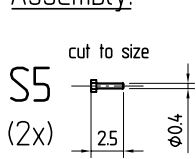
Preparation:



E27  
bend



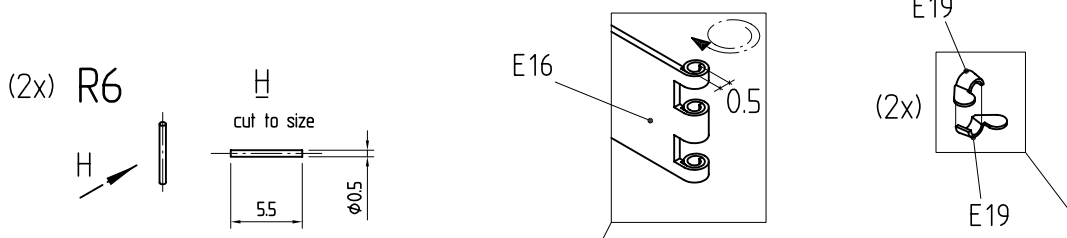
Assembly:



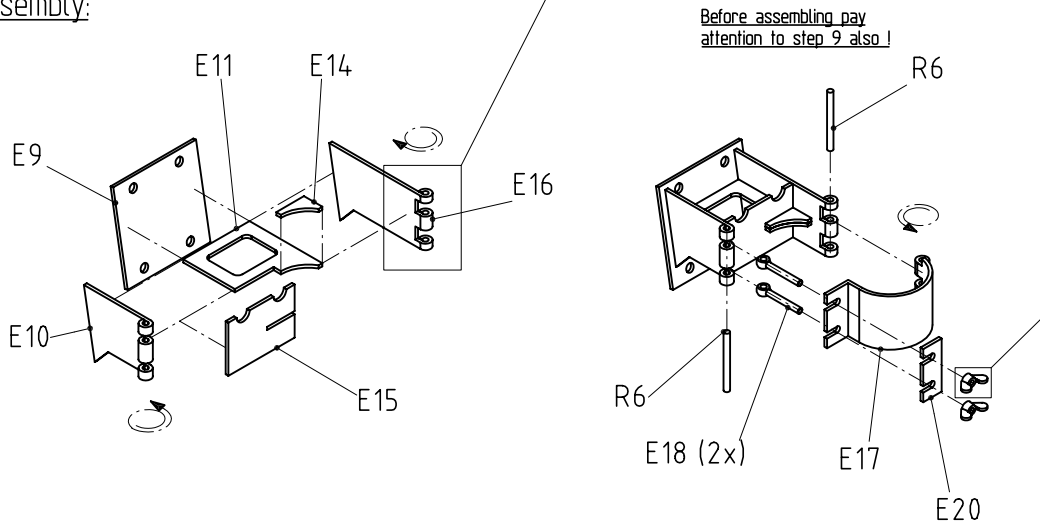
**Assembly Instructions for 1/16 Scale Sturmiger Conversoins**  
**Amunitioncrane**

**Step 6 / 7**

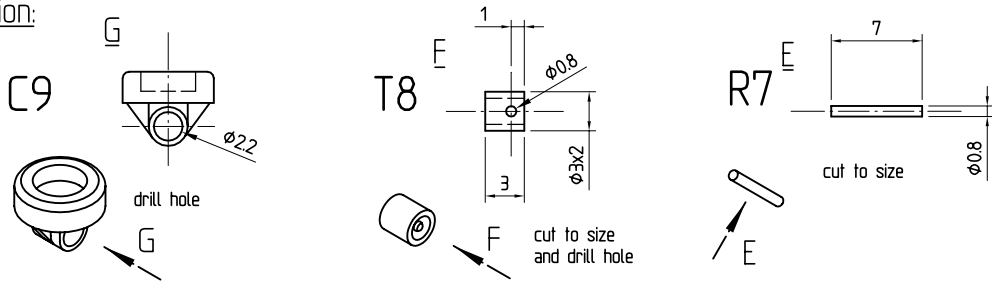
Preparation:



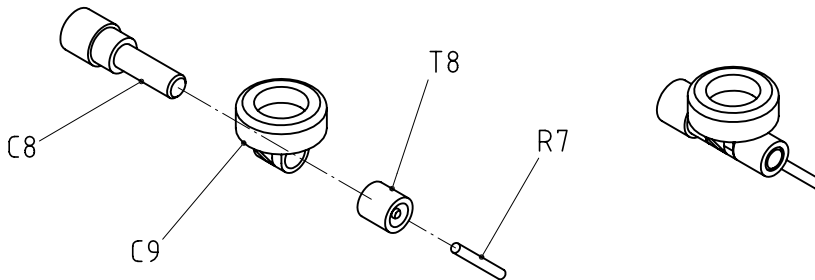
Assembly:



Preparation:



Assembly:

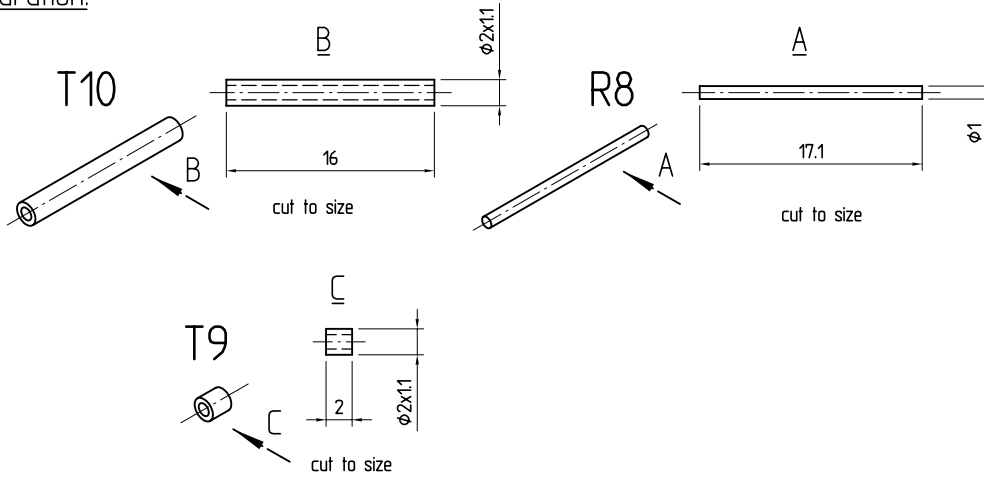




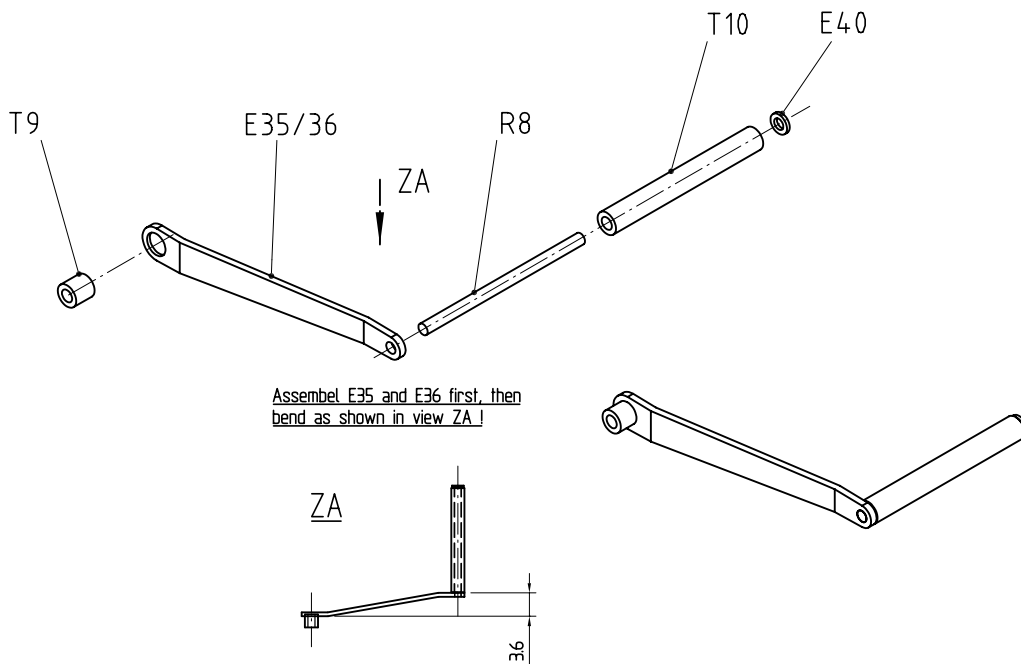
**Assembly Instructions for 1/16 Scale Sturmiger Conversoins  
Amunitioncrane**

**Step 8**

Preparation:



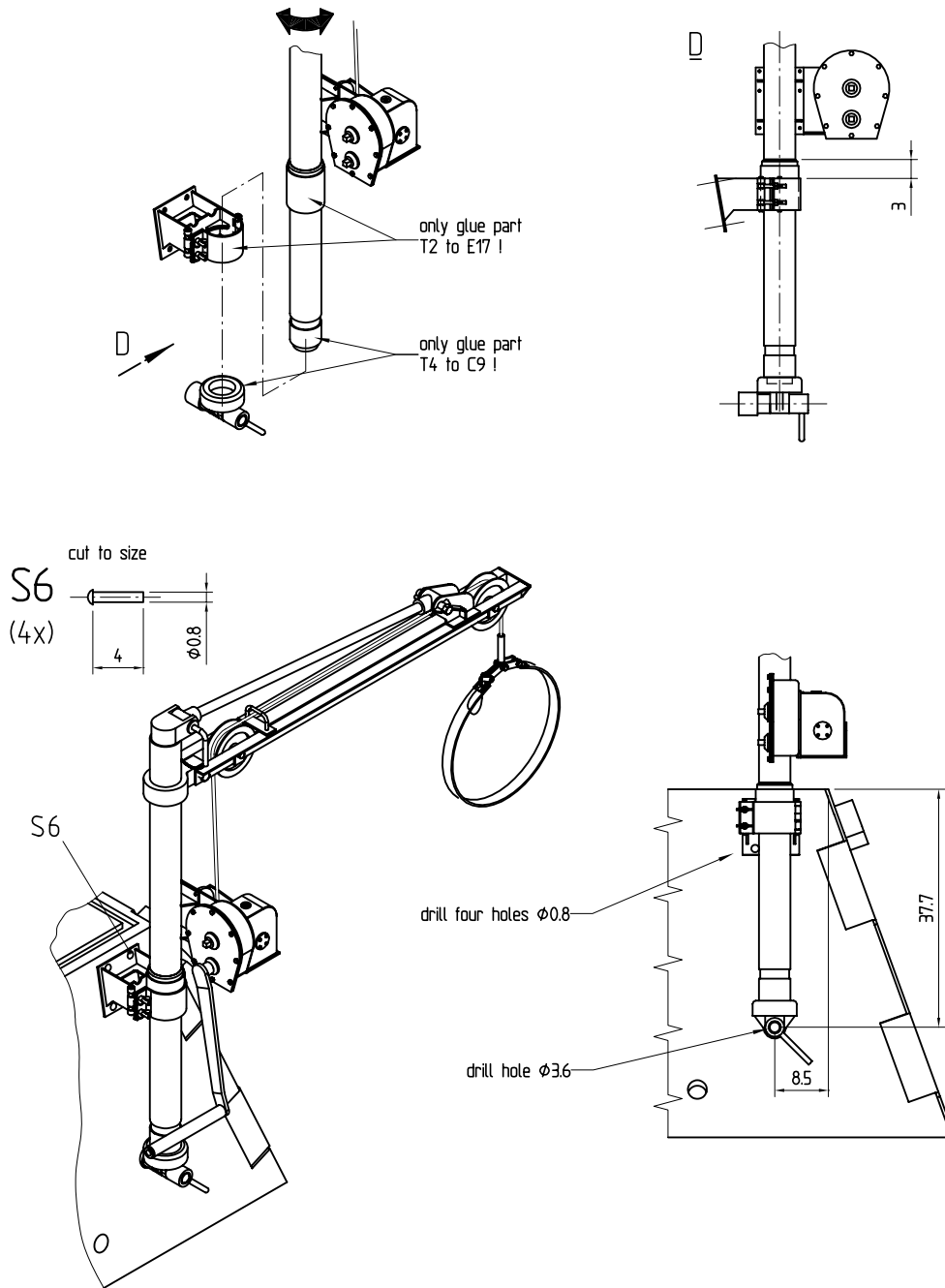
Assembly:



**Assembly Instructions for 1/16 Scale Sturmiger Conversoins**  
**Amunitioncrane**

**Step 9**

Assembly:



**ELITE ARMOR PRODUCTION and WECOHE PRODUCTS**  
**Assembly Instructions for 1/16 Scale Sturmtiger Conversoins**  
**Amunitioncrane**

Thank you for your purchase of our products and Happy Tanking!

***Elite Armor Productions & WECOHE Products***

[www.elitearmor.com](http://www.elitearmor.com)

[www.wecohe.com](http://www.wecohe.com)